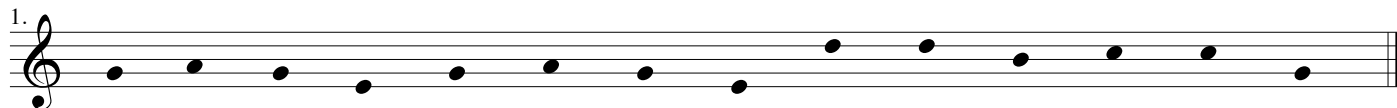
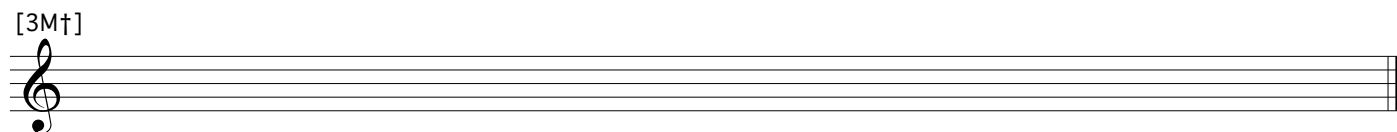


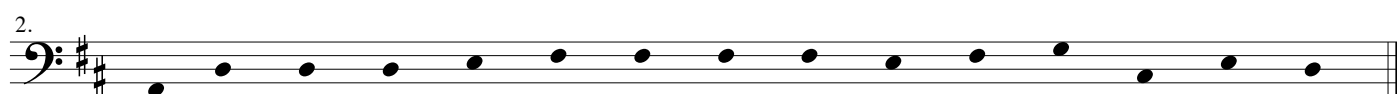
WS 09: Melodi yo nou ka rekonèt

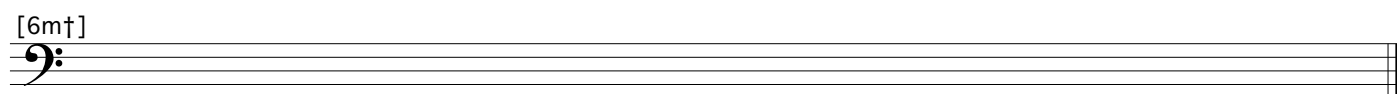
Siyati _____

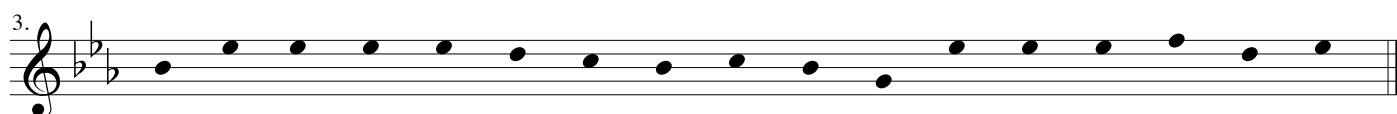
Gen pati melodi ke nou ka konnen ki note anba SAN oken symbòl ritmik oswa metrik. Identifye melodi a epi, sou pòte ke ou wè ekri melodi a ak chif endikatè apwopriye e valè de tan korèk. Nan majorite de ka, nou ka jwenn plizyè repons korèk, men fok ou sensibil pou niyans melodi a pou deside ki nan plizyè repons bay intepretasyon ki pi bon. [Opsyon: transpoze nòt yo jan yo endike yo, pandan ke ou tou bay nouvo amati a.]

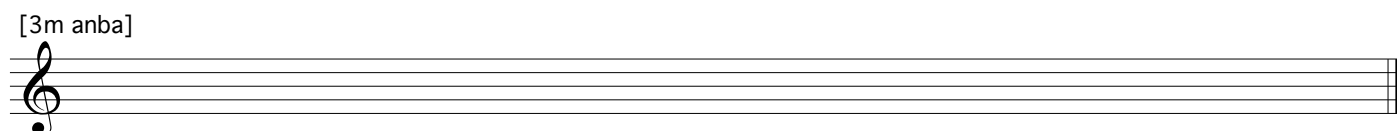
1. 


[3M†] 

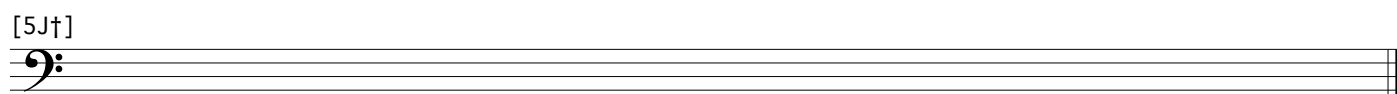
2. 

[6m†] 

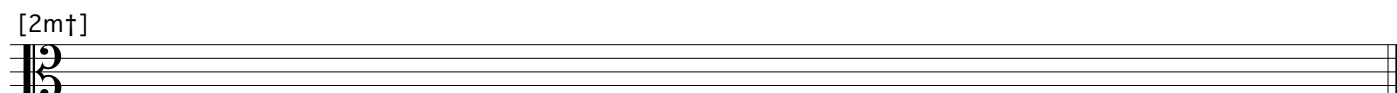
3. 

[3m anba] 

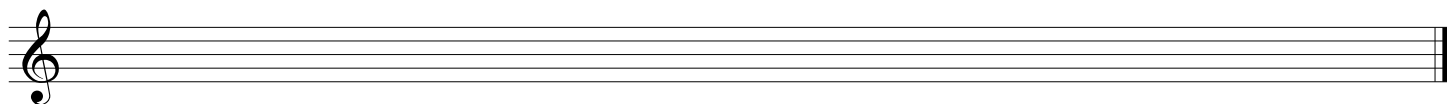
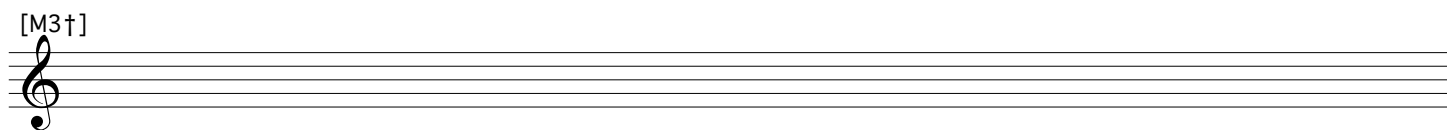
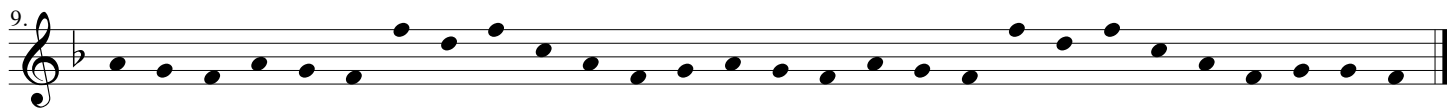
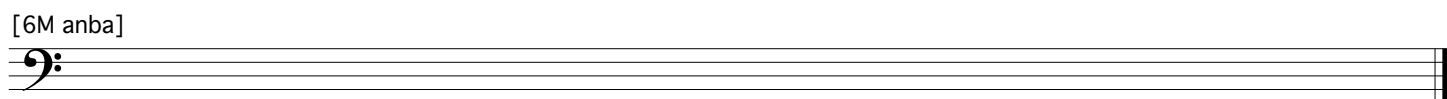
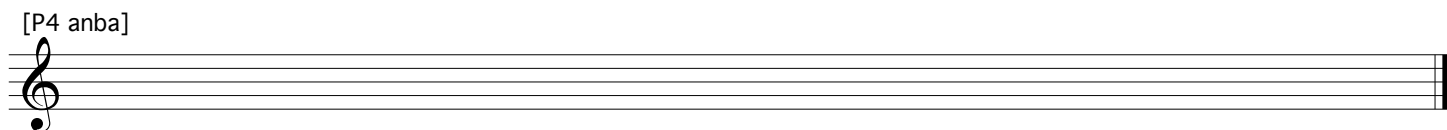
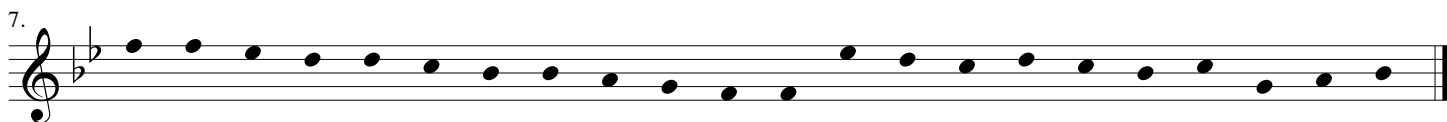
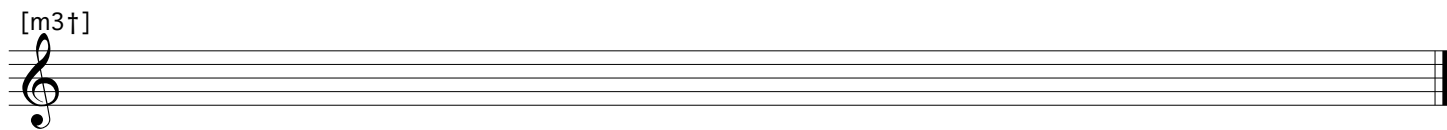
4. 

[5J†] 

5. 

[2m†] 

Melodi yo nou ka rekonet, kontiniye



Melodi yo nou ka rekonet, kontiniye

10.

[d5†]

11.

[a4¥]

12.

[A5¥]

Melodi yo nou ka rekonet, kontiniye

13.

Musical notation for exercise 13, bass clef, key signature of two flats. The melody consists of 16 eighth notes: G2, A2, B2, C3, D3, E3, F3, G3, A3, B3, C4, B3, A3, G3, F3, E3.

[d6¶]

Empty bass clef staff for accompaniment.

Empty bass clef staff for accompaniment.

14.

Musical notation for exercise 14, bass clef, key signature of two flats. The melody consists of 16 eighth notes: G2, A2, B2, C3, D3, E3, F3, G3, A3, B3, C4, B3, A3, G3, F3, E3.

[A2†]

Empty bass clef staff for accompaniment.

Empty bass clef staff for accompaniment.

15.

Musical notation for exercise 15, bass clef, key signature of three sharps. The melody consists of 16 eighth notes: G2, A2, B2, C3, D3, E3, F3, G3, A3, B3, C4, B3, A3, G3, F3, E3.

[A4¶]

Empty bass clef staff for accompaniment.

Empty bass clef staff for accompaniment.